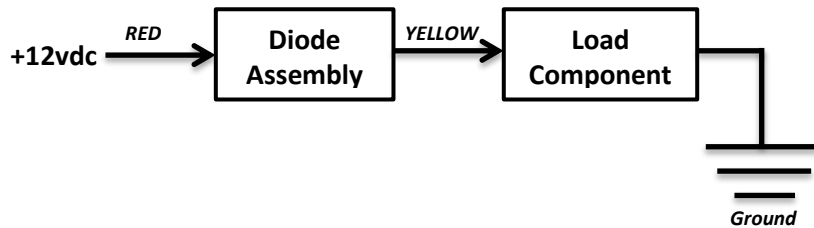


Doing electrical work but aren't quite sure of yourself? Pick up a copy of our Basic Auto Electricity Book (#BAEB). This fact filled book walks you through electricity from the basics to a complete automotive circuit diagram, all for just \$7.95!

Typical General Circuit Installation



Excellent for preventing electrical back-feeding in high amp Circuits such as a radiator fan, amplifier or any other circuit you want to fully isolate. Only 2/10ths of a volt drop across the diode allows maximum forward voltage.

85 AMP DIODE

#L-85A-DIODE

Contains:

- 85 Amp Diode with 10 gauge wire leads
- (2) Butt Connectors for easy connections

Thank you for buying a Streetworks product. Be confident that it will provide the quality and performance that you demand for your car. Please read and understand ALL installation instructions before beginning. Planning and preparation will make the actual installation process easy and quick. Disconnect power at the battery before doing any wiring!

1. The diode will be installed in-line to the component being powered. Current flows through the diode from the RED wire (INPUT), then out the diode via the YELLOW wire (OUTPUT) and prevents any back-feeding of current. **See diagram on left.**
2. Install the diode using the butt connectors provided.
3. Test operation for correct installation.

Diode Assembly

