

Watson's **StreetWorks** *DRIVE IT !*

4 Bud Way, Ste 3, Nashua NH 03063
866.859.0513
Tech@watsons-streetworks.com



Please read and understand all installation instructions before beginning. Planning and preparation will make the actual installation process easy and quick. **DISCONNECT ELECTRICAL POWER AT THE BATTERY BEFORE DOING ANY WIRING !**

StreetWorks turn signal switches are designed to separate the brake light and turn signal functions so that a single bulb / filament (like an 1157 bulb) can be used for both functions just as on modern vehicles. Our units use high power relays for each the left and right rear and front signals, so you can use several bulbs (even halogens) without problem.

- 1. THE TURN SIGNAL MODULE (4 RELAY UNIT - MARKER) AND TIMING MODULE** can be mounted under dash or at other convenient locations. Extra lengths of wire that you use must be of sufficient size and all connections sound. The modules should not be allowed to get wet. Wire per the wiring diagram.
- 2. SWITCH MOUNTING** may be done in dash or console. The switch assembly requires mounting hole(s) per the diagram below. **(Do not over tighten switch nut!)**
- 3. CONNECTIONS.** Wire per the diagram on the reverse side of these instructions with the following additional notes: CAUTION! There are different wires of the same color in this kit. Compare the switch assembly, Timing Module and Turn Signal Module to our diagram to be sure that you have the correct wire(s). Connect the RED LEAD WIRE(S) for the switch and Timing Module to +12 volt dc power, fused 2 amps from an ignition controlled circuit. The GRAY LEAD WIRE and YELLOW LEAD WIRE coming out of the Timing Module are each to be joined with one of the gray Turn Signal Module wires. When completed, the gray Timing Module lead will go to the left Turn Signal Module feed. The yellow Timing Module lead will go to the right Turn Signal Module feed. See wiring diagram.
- 4. RECONNECT** main power and test your connections. Should the left and right signals be reversed, simply reverse the gray and yellow leads connected in step #3 above.

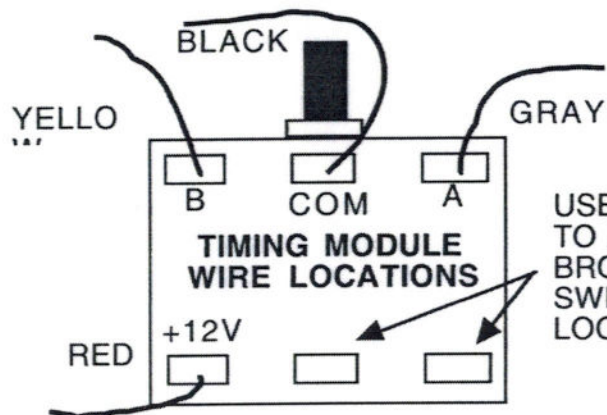
OPERATING INSTRUCTIONS: To actuate the turn signals push the right button for right turns or the left button for left turns. Only a single push is needed. The signal will work for the timed interval before turning itself off. You may reactivate the signal at any time before or after it shuts off to restart the timed interval or hold the signal on temporarily, the timed period starts after you release the signal switch. To adjust the timed interval, turn the adjustment knob on the timer module counter-clockwise to shorten, clockwise to lengthen. The adjustable timed interval is approximately 1 to 45 seconds.

Timed self-canceling turn signals do not have 4-way capability built in. However, StreetWorks has an add-on switch to provide battery fed 4-way hazard capability, part #L10-SC4W.

TURN SIGNAL SWITCH KIT #L10R-PBSC
Dual Round Chrome Push Button \$185.00
Timed Self-Canceling

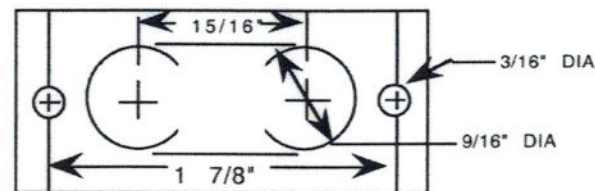
Small, clean round chrome push button switches control a Module with brake light override circuitry so a single brake / turn bulb (like an 1157 bulb) can be used. Timed self-canceling means that one push on the switch gives 1 to 45 seconds of adjustable, timed turn signal flashing. Dash or console mount switches are on a billet aluminum face plate.

Manufactured by Watson's StreetWorks Rod & Custom Products



USE 2 SPARE TERMINALS TO ATTACH PURPLE AND BROWN WIRES FROM THE SWITCH. SPECIFIC LOCATION IS REVERSIBLE.

TEMPLATE for L10-PBSC



Wiring Connections

